

# Aspendale Gardens Primary School

## Newsletter—Thursday 16<sup>th</sup> February



**INQUIRER THINKER BALANCED RISK-TAKER KNOWLEDGEABLE**  
**REFLECTIVE PRINCIPLED CARING OPEN-MINDED COMMUNICATOR**



Primary Years Programme

*Aspendale Gardens is an IB World School that strives to be internationally minded.*

*Our purpose is to provide a supportive safe and dynamic learning environment. We promote inquiry, curiosity, creativity and individuality. We aim to develop a resilient, open-minded school community where all students become independent, emotionally intelligent and socially competent as they strive to achieve their potential as global citizens.*

### 2023 DIARY

#### FEBRUARY

Friday 17 Year 6 ISS vs Edithvale PS @ Home  
Thursday 23 Running Group @ 7:30am  
Friday 24 Year 6 ISS vs Chelsea Hts PS (away)  
Monday 27 School Council Meeting @ 6:30pm  
Tuesday 28 Year 2 Wetlands Excursion

#### MARCH

Wednesday 1 **MSP SCHOOL PHOTOS**  
Order via link on Compass  
Thursday 2 Running Group @ 7:30am  
Friday 3 District Swimming Carnival  
Year 1 Team Building Incursion

#### MARCH

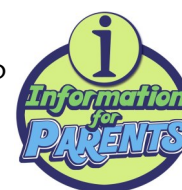
Monday 6 **Clean Up AGPS Week**  
Year 3 Operation Empathy Incursion  
Wednesday 8 Years 3—6 Inter-House Cross Country (9.00am—11.00am)  
Thursday 9 Running Group @ 7:30am  
Year 6 Coral Vass Incursion  
Friday 10 Year 6 ISS vs St Louis @ Home  
Monday 13 **LABOUR DAY HOLIDAY**  
Wednesday 15 Kingston Division Swimming Carnival  
Friday 17 Year 6 ISS vs St Joseph's PS @ Home  
Year 4 Royal Botanic Gardens Excursion

### FROM OUR ACTING PRINCIPAL

It has been another fantastic week at Aspendale Gardens Primary School. The students have been finding out more about their PYP unit of Inquiry. See an information page further in this email to gain more of an understanding of our Primary Years Program (PYP). The students in Years 3 – 6 have been writing short speeches and deciding whether they would like to take on a role in our Student Representative Council (SRC). Two students are selected from each class.

#### Parent Information Sessions

This week our parent information sessions were held in the classrooms. For those parents who were unable to attend the sessions, the teachers will make the slides available to keep you informed. Should you have any further questions, please contact your child's class teacher.



#### Swimming Trials

On Wednesday Mr King organised the swimming trials for the Year 3 – Year 6 students who wanted to participate and be considered for our school team. The swimming times will be used to decide on which students will represent AGPS in the District Swimming Carnival on Friday 3<sup>rd</sup> March. Well done to the 60 plus students who attended on their excellent effort. Thank you to Mr King, Mr Murphy and Ms Hunt who assisted with these trials.

#### Notice of School Council Elections

On Monday 13<sup>th</sup> February all families received a notice of election and call for nominations for our School Council. Notices were sent home via the youngest in the family. All information required can be found in the documentation sent home. Please contact the school office if you have any queries. Nominations need to be sent back to the office no later than 4:00pm on Monday 20<sup>th</sup> February. Nomination forms are available from the office. We look forward to receiving the nominations.



### Emergency Evacuation

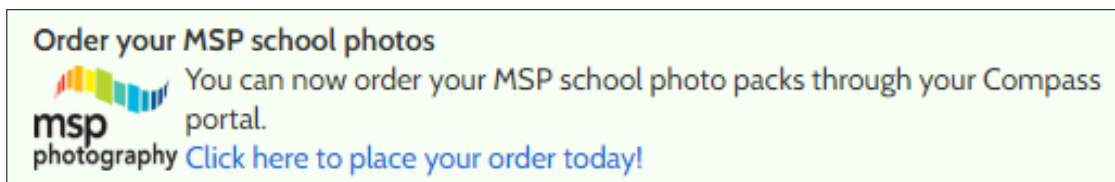
Next Monday we will be running an emergency evacuation drill. As this will be the first one for the year, our teachers will be talking to their classes to prepare them and to ensure the students will not be too worried when they hear the siren. The teachers will be explaining the importance of the emergency evacuation drill, the procedures and expectations. We encourage parents to also have conversations with their children about emergency procedures at school and also what they might do in an emergency situation at home. At school our main assembly point is on our school oval. Following the evacuation drill, we will reflect on our processes and the time it took to safely evacuate all people on site.

### EVACUATION PROCEDURE

- 1** WHEN ALARM SOUNDS. LEAVE IMMEDIATELY BY THE NEAREST EXIT.
- 2** PROCEED IN AN ORDERLY MANNER TO ASSEMBLY POINT.
- 3** REMAIN AT ASSEMBLY POINT UNTIL ALL-CLEAR IS GIVEN.

### School Photographs

The school photography company, MSP Photography will be in school on Wednesday 1<sup>st</sup> March. They will take individual photos, class group photographs and pre-ordered family portraits. Photographs can be ordered through the Compass portal. You will now see the message below when you login to your Compass account.



### Ritchies Community Benefit Card

A number of our parents, grandparents and community members have a Ritchies Community Benefit Card. <https://www.ritchies.com.au/loyalty/ritchies-card>

When you sign up to the program and nominate our school as the beneficiary, every time you spend \$10 at Ritchies a percentage of the money spent will be donated to our school plus member-exclusive pricing. This month we received \$108. We encourage you, your families and community friends to download the Ritchies Card app, or register a card online, and nominate Aspendale Gardens Primary School. We thank you for your support.



Have a wonderful weekend everyone,

*Jonathan*

## SECOND HAND UNIFORMS

ALL items \$5.00 each.

Uniforms are available to purchase during  
office hours: 8:30am — 4:30pm

If you have any school uniforms that your child has outgrown,  
and it is still in good condition, please consider donating it.

All donations can be left at the school office.





# STARS OF THE WEEK

## TERM 1 WEEK 2



Foundation—Year 2



Year 3—Year 6



Specialists



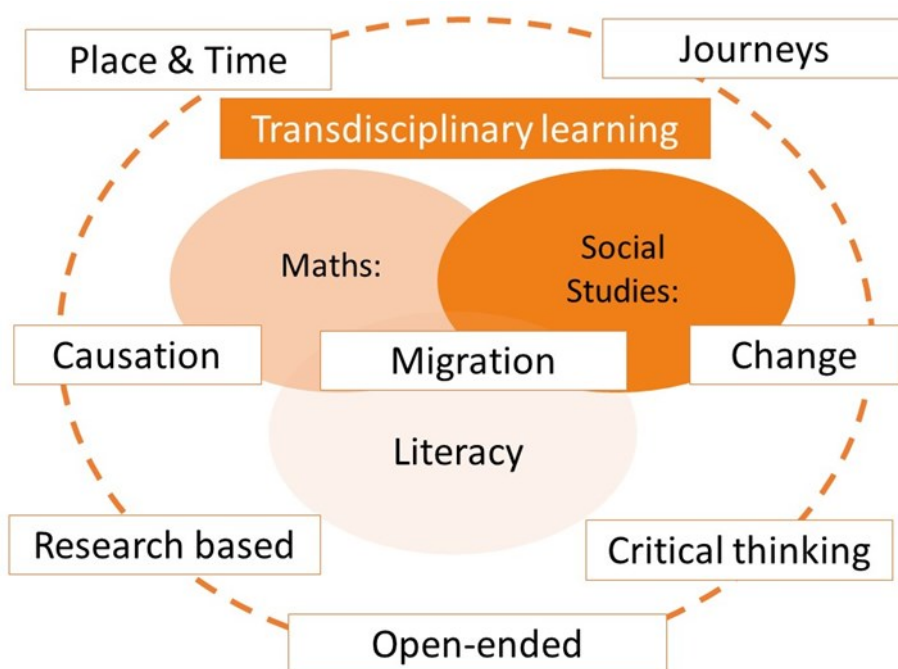
# PYP at Aspendale Gardens Primary School

Aspendale Gardens Primary School is an International Baccalaureate (IB) school that presents the Victorian Curriculum under the Primary Years Program (PYP) umbrella. What does this mean for your child?

**The IB, PYP program encourages teachers to provide experiences that provoke student thinking, invite wonder and encourage going further whilst interconnecting the Victorian Curriculum content.**

*There are six Transdisciplinary themes in which the Victorian Curriculum content is presented and connected:*

- Who we are**
- How the world works**
- How we express ourselves**
- How we organise ourselves**
- Sharing the planet**
- Where we are in place and time**



**This diagram is an example of a transdisciplinary unit integrating maths, social studies and literacy content as well as employing critical thinking and research skills.**



**OUR CANTEEN IS OPEN**  
**WEDNESDAY, THURSDAY & FRIDAY**

**Counter sales are available at  
lunchtime only**

**Please place Lunch orders via QKR**

**QKR closes at 9:00am  
on day of delivery**

**Qkr!**

**Qkr!**

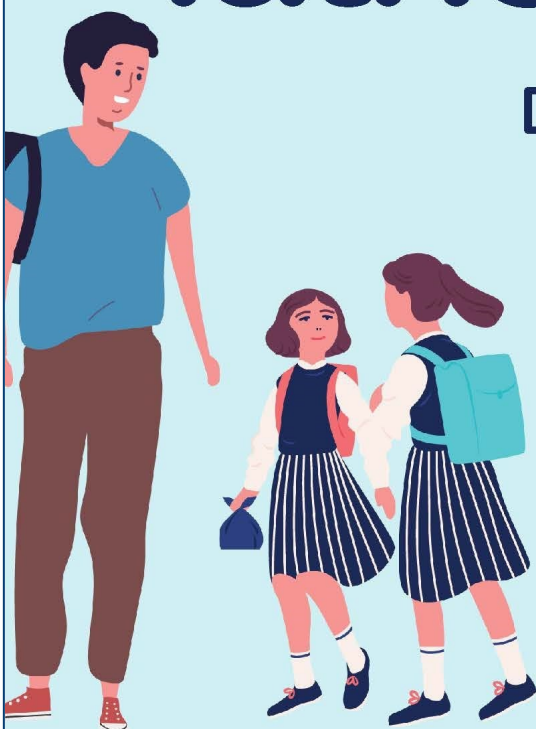
**Calling all**



**dads and  
father-figures!**

Did you know we have a

**Dads' Group ?**

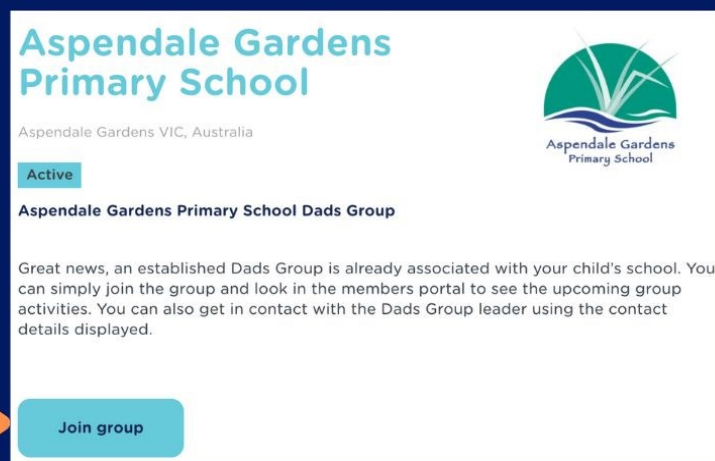


# How to join our dads' group:

## DAG's

### Step 1:

<https://thefatheringproject.org/dads-group/aspendale-gardens-primary-school/>



**Aspendale Gardens Primary School**

Aspendale Gardens VIC, Australia

Active

**Aspendale Gardens Primary School Dads Group**

Great news, an established Dads Group is already associated with your child's school. You can simply join the group and look in the members portal to see the upcoming group activities. You can also get in contact with the Dads Group leader using the contact details displayed.

Join group

### Step 2:

Join Group



\*Are you a member of The Fathering Project?

☐ Yes

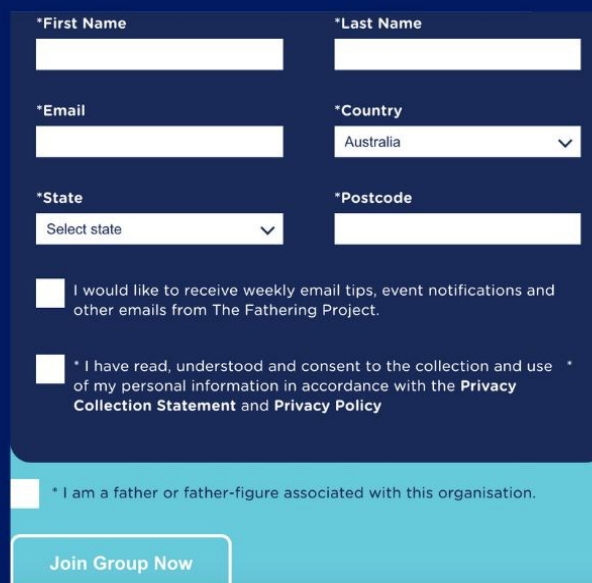
☒ No

### Step 3:

Select NO

### Step 4:

Enter your details and select "Join Group Now"



\*First Name

\*Last Name

\*Email

\*Country

Australia

\*State

Select state

\*Postcode

☐ I would like to receive weekly email tips, event notifications and other emails from The Fathering Project.

☐ \* I have read, understood and consent to the collection and use of my personal information in accordance with the **Privacy Collection Statement** and **Privacy Policy**

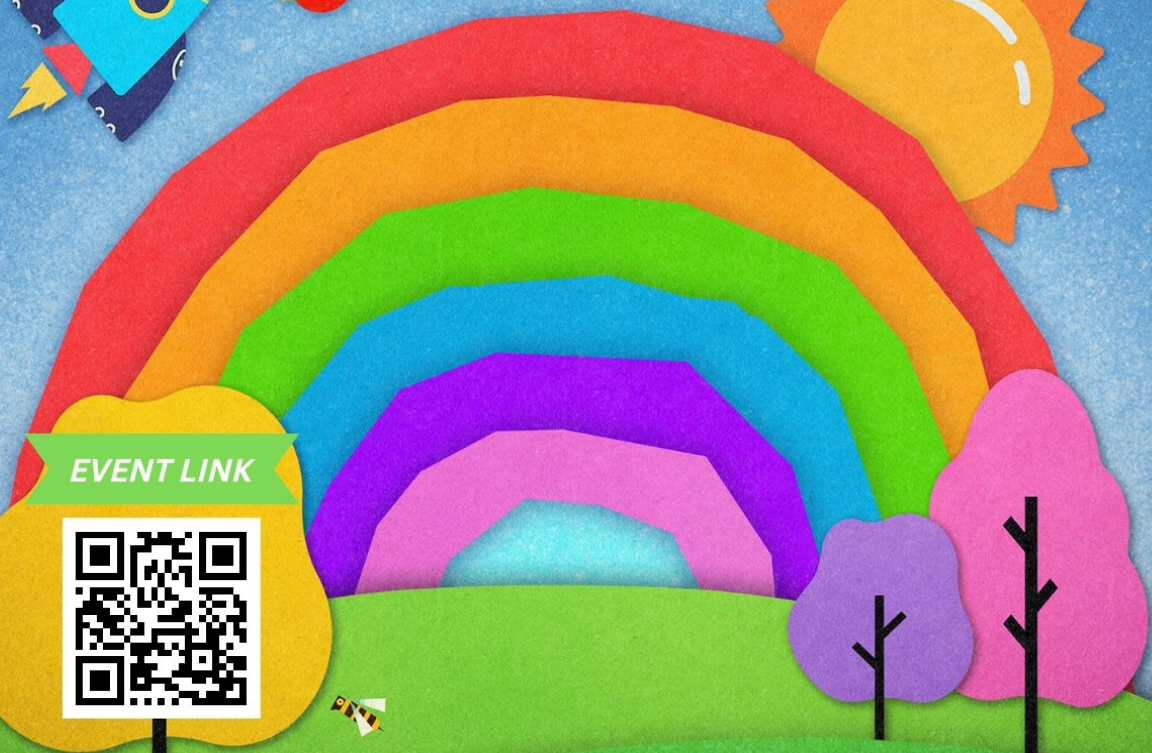
☐ \* I am a father or father-figure associated with this organisation.

Join Group Now



# the biggest Playdate

CARNIVAL FUN DAY TO HELP CHILDREN WITH CANCER



EVENT LINK



## SUNDAY 5TH MARCH 2023

ASPENDALE GARDENS COMMUNITY CENTRE • 10AM - 3PM





# MORDIALLOC



## REDBACKS

JUNIOR FOOTBALL CLUB

# PLAYERS WANTED!

## ALL WELCOME



[mordyregos@gmail.com](mailto:mordyregos@gmail.com)

**0401 699 729**

**PURPOSE. PASSION. BELONG.**

**#REDBACKSREADY**

[www.mordyredbacksjfc.com.au](http://www.mordyredbacksjfc.com.au)



# CHARLESWORTH WALSH *Dance Centre*



Classes from beginner to  
advanced.

All ages, levels & abilities

*BALLET*

*POINTE*

*JAZZ*

*HIP HOP*

*TAP*

*CONTEMPORARY*

*DRAMA*

Somerville studio

*ACROBATICS*

Somerville studio

*SINGING*

Somerville studio

*POM*

Somerville studio

*MUSICAL THEATRE* Somerville studio



**ENROL NOW FOR 2023**

**Somerville studio**



0421 574 659

[www.cwdcpeninsula.com.au](http://www.cwdcpeninsula.com.au)

[cwdcpeninsula@yahoo.com](mailto:cwdcpeninsula@yahoo.com)

**Aspendale Gardens**



0431 328 515

[info@cwdance.com.au](mailto:info@cwdance.com.au)

**Mt Waverley**



0423 473 447



**Gentle and Caring Services**

**Children's Dental Therapist**

**General, Cosmetic  
& Implant Dentistry**

**Exams for children under 4 free**

**9590 9120**

[www.dentalharmony.com.au](http://www.dentalharmony.com.au)

286 Wells Road,  
Aspendale Gardens



dental harmony

17SPVD426B31F/M/09



# Messy Play

23rd Feb & 30th Mar

9:30am - 10:30am

**\$15 per session +**

\$15 AGCS annual membership if not already paid

Messy play or sensory play, is a process where children can engage all of their senses as they explore different materials. The play is open ended, and focused on process rather than end result.



## STORYTIME AND CRAFT

Join us at Aspendale Gardens Community Service for stories and craft for young children.

**When:**

Tuesday 14 February 2:30-3:15pm | Tuesday 28 March 2:30-3:15pm | Wednesday 24 May 11-11:45am



**More information:**  
**Online** [library.kingston.vic.gov.au](http://library.kingston.vic.gov.au)  
**Phone** 1300 135 668  
**In person** at any library branch.



Phone: 9587 0877 Email: [aspendale.gardens.ps@edumail.vic.gov.au](mailto:aspendale.gardens.ps@edumail.vic.gov.au) Website: [www.agps.vic.edu.au](http://www.agps.vic.edu.au)



# FREE KIDS & ADULTS CLINICS

Edithvale Golf Course

Register: Kids - [MyGolf.org.au](http://MyGolf.org.au)  
Adults - [Golf.org.au/GetIntoGolf](http://Golf.org.au/GetIntoGolf)

Search for Edithvale Golf Course  
Register under Free Clinics

Or Contact for Queries  
PGA Pro Paul Boxall - 0414 892 535



BASKETBALL



SOCCER



CRICKET

AFTER SCHOOL SPORTS

## Kids Parties

- Space jump
- Sports & jump
- Dodgem cars
- Nerf wars
- Bubble soccer
- Laser tag



FREE TRIAL SESSION

5:30pm-6:30pm

Mondays & Wednesdays

5-7 year olds | 8 - 11 year olds

Tel: 9547 2555

\$15/sessions

[springvaleindoorsports.com.au/junior-sports](http://springvaleindoorsports.com.au/junior-sports)